

# Bosch BFP038 Intank High Pressure Fuel Pump



**Brand:** Bosch Motorsport

**Product Code:** BOSBFP038

**Availability:** 2

**Weight:** 0.25kg

**Dimensions:** 10.00cm x 6.00cm x 5.00cm

**Price: \$88.00**

## Short Description

Neat, compact with low current draw for pressure, the BFP038 is suited to moderate demand fuel systems, especially when retro fitting Heritage throttle bodies.

## Description

Neat, compact with low current draw for pressure, the BFP038 is suited to moderate demand fuel systems, especially when retro fitting Heritage throttle bodies.

## Specifications

- >105l/h @ 3bar
- In-tank pump kit
- Includes filter
- includes electrical connector
- includes rubber hose pipe adaptor
- 38mm diameter body

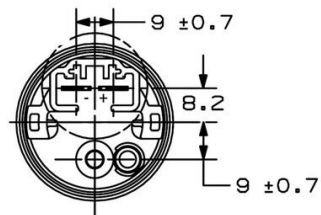
**BOSCH**

# >105l/h @3bar In-tank Fuel Pump, BFP038 0 986 580 979

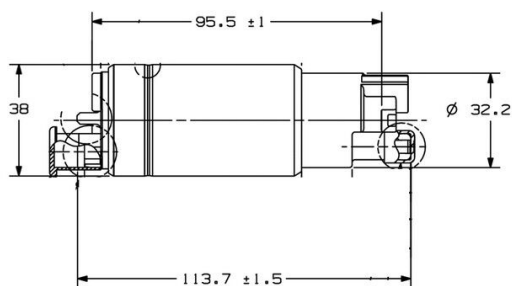


- >105l/h @ 3bar
- In-tank pump kit
- Includes filter
- Includes electrical connector
- Includes rubber hose pipe adaptor
- 38mm diameter body

## Electrical Connection



## Dimensions



## Characteristic Data

See description. For further details contact Bosch Motorsport

## Notes

Robert Bosch (Australia) Pty Ltd | [www.bosch-motorsport-shop.com.au](http://www.bosch-motorsport-shop.com.au) | [motor.sport@au.bosch.com](mailto:motor.sport@au.bosch.com) | [www.facebook.com/BoschMotorsportAustralia](https://www.facebook.com/BoschMotorsportAustralia)

## Product Gallery