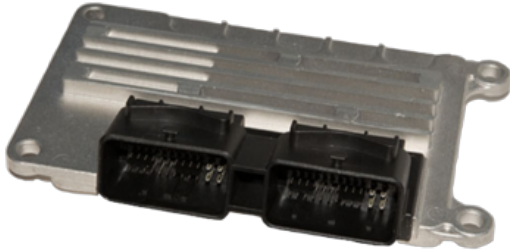


EFI Technology Euro 4



Brand: EFI Technology

Product Code: EFF14B

Availability: In Stock

Weight: 0.37kg

Dimensions: 16.50cm x 9.50cm x 2.10cm

Price: \$2,750.00

Short Description

Euro4 is the latest generation engine management system from EFI Technology and OBR Control Systems. It is one of the smallest and most powerful ECU's for use on port injected engines with up to 8 cylinders.

Based on a modern production car ECU, Euro4 is built to conform to the latest high performance automotive technology standards. This ECU is designed to form the centre of an integrated electronic systems in a modern competition car and offers an extraordinary high level of features at an attractive price.

Description

Features

Euro4 can control normally aspirated, turbo charged and super charged engines. Additionally, the ECU can control a drive by wire throttle body with safety features recognised from production cars.

It has built in ignition drivers for both inductive (high current) and logic operated ignition coils and can control up to 8 cylinders in full sequential mode. or 4 cylinders if using staged injection. It accepts up to four crankshaft and camshaft sensors, either inductive or hall effect. The Euro4 can control many bespoke

variable camshaft timing systems found on modern engines.

Euro4 has a total of 22 analogue and 13 digital sensor inputs. The advanced software allows the user to configure the ECU to accept inputs from a wide variety of sensors.

Euro4 is also capable of running Direct Injection gasoline engines. DI software strategies allow control of both Bosch and Hitachi high pressure pumps with GM Ecotec and VW TFSI engine types software selectable. Other DI engine types will require scope traces of crank and cam and pump lobes to be submitted.

Euro4 is homologated for use in S2000 rally cars and WTCC.

CAN Communications

Its extensive CAN (Controller Area Network) capabilities, with 2 individual CAN buses, ensures a simplified electrical installation combined with very advanced and flexible features. The data export includes a user-defined CAN configuration with 16 available channels.

Data from eight additional sensors and commands from other CAN bus systems in the car can be imported via CAN.

Data Logging

Data can also be recorded using Euro4's internal 8mb data logger. As well as ECU and sensor data channels, Euro 4 can also log data from other systems, such as external CAN modules, OBD PCM's and membrane switch panels.

Product Gallery

